

Rotary electronic dimmer switches

MGU3.510.XX

400 VA, 1-10 V

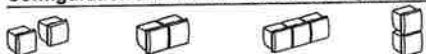
Area of application

- Regulation of different loads (see load table) for homes and buildings.
- Suitable for renovation as it allows replacement of a switch or a selector switch by a regulator without having to change cables.
- As the regulator reduces the current supplying the load, it allows considerable energy savings.

Technical data

- Rated voltage: 230 V AC $\pm 10\%$, 50 Hz.
- For fluorescent tubes $\varnothing 26$ and 38 mm with 1-10 V adjustable electronic ballast.
- For 10 x 1-10V ballast with 36 W fluorescent tubes or 5 x 1-10V ballast, 2 x 18 W fluorescent tubes, $\varnothing 26$ and 30 mm.
- External relay control: maximum of 50 x 1-10 V ballast.
- Fuse: 4 Ah, 230 V AC, 5 x 20 mm.
- Max. control current: 200 mA.
- Output power derating with 2 or 3 devices combining:

Configuration and number of combining devices



Output power derating

25 %	25 %	40 %	50 %
------	------	------	------

Load table

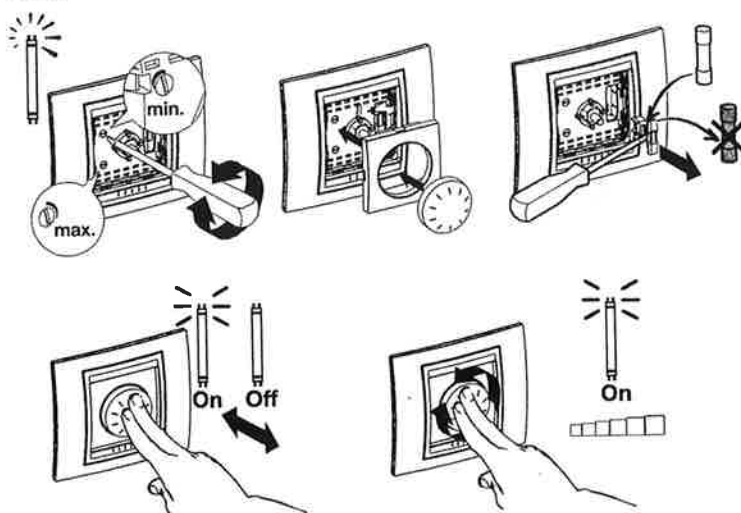
25 °C 230 V 50 Hz	1	2	3	4	5	6	7	8	9
Max. VA	NO	NO	NO	NO	NO	400	NO	NO	NO

- 1 - Incandescent lamps
- 2 - Halogen lamps
- 3 - Low voltage halogen lamps with ferromagnetic transformer
- 4 - Low voltage halogen lamps with electronic transformers
- 5 - Fluorescent lamps with conventional ballast
- 6 - Fluorescent lamps with dimmable electronic ballast (1-10 V)
- 7 - Compact fluorescent lamps
- 8 - LED lamps
- 9 - Motors (single phase)

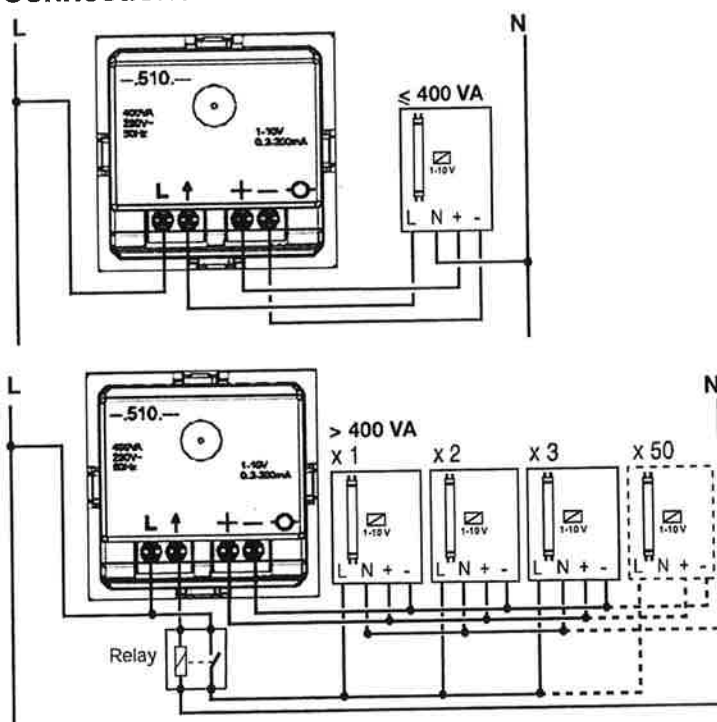
Standards

In accordance with EN 60669-2-1.

Use



Connections



Connection terminals: screw connection for cables up to 2 x 2.5 mm²

Dimensions (mm)

